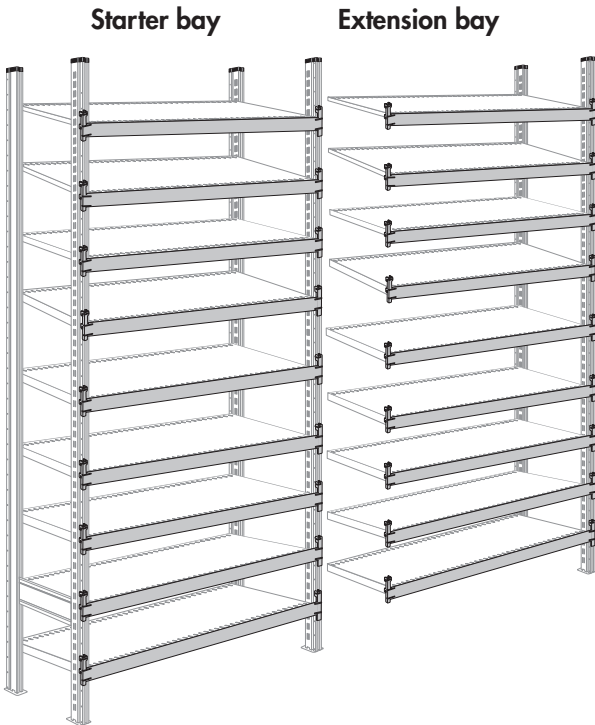


**SSI SCHÄFER**

# ON-LINE SHELVING W 3000 PLUS

FOR US, IT'S PERSONAL

# W 3000 PLUS



## Simply better – Your W 3000 PLUS

Based on the R 3000, the W 3000 PLUS was developed especially for C-parts specialist Würth Industry North America. Starter and extension bays are tailored to fit the requirements and dimensions of the W-KLT 2.0. Whether in the galvanized version or in RAL 3020, the W 3000 PLUS is compatible with the standard R 3000 racking in all components and always makes a good impression for the correct storage of your C-parts.

The profile with its unique, enclosed design ensures a high load capacity up to 7000 Lbs. and has a compact footprint providing optimal space utilization. The special slot pattern with a spacing of 26.75 in provides mounting options for appropriate accessories. Stable cross beams provide a secure structure for shelves as well as allowing the incline to be adjusted. They can also be used as a surface to house kanban labels so that your small parts are stored in a structured way and can be clearly identified. The special-beam in red gives an additional opportunity to mount the RFID i-shelf.

The 9 heavy-duty, chamfered shelves with enclosed corners and safety edging complete the overall package that not least thanks to the simple assembly process – is simply better.

## COMPLETE RACKING

Comprising 2 frames or 1 frame including base plates, cover caps as well as 9 shelves each with 2 cross beams per shelf-level and the corresponding load sign.

Starter bay	Height in	Bay width in	Bay depth in	Bay load lbs*	Color
	86	39.52	23.62	440	galvanized

Extension bay	Height in	Bay width in	Bay depth in	Bay load lbs*	Color
	86	39.52	23.62	440	galvanized

Starter bay	Height in	Bay width in	Bay depth in	Bay load lbs*	Color
	86	39.52	31.49	440	galvanized

Extension bay	Height in	Bay width in	Bay depth in	Bay load lbs*	Color
	86	39.52	31.49	440	galvanized

Starter bay	Height in	Bay width in	Bay depth in	Bay load lbs*	Color
	86	50.86	23.62	550	galvanized

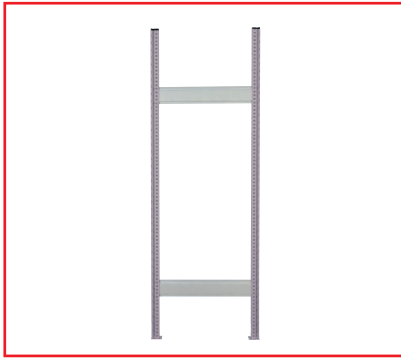
Extension bay	Height in	Bay width in	Bay depth in	Bay load lbs*	Color
	86	50.86	23.62	550	galvanized

Starter bay	Height in	Bay width in	Bay depth in	Bay load lbs*	Color
	86	50.86	31.49	550	galvanized

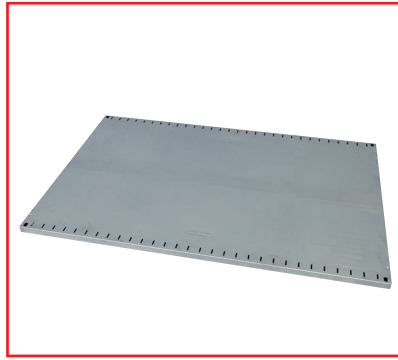
Extension bay	Height in	Bay width in	Bay depth in	Bay load lbs*	Color
	86	50.86	31.49	550	galvanized

\*Spacing details given are based on even loads. The load details apply only when using shelves with two W 3000 PLUS cross beams per level.

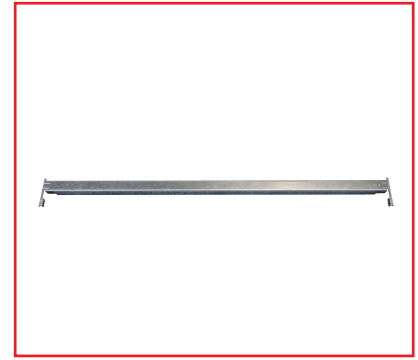
\*\*The standard order includes the galvanized version.



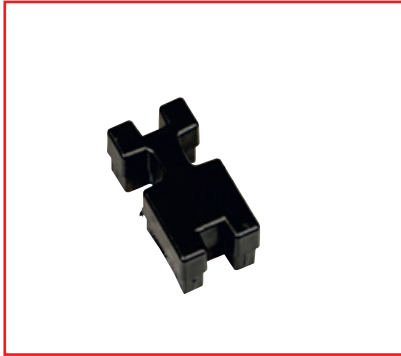
**Frame**



**Shelf**



**Cross beam**



**Cover cap**



**Load sign**



**RFID cross beam**

## INDIVIDUAL PARTS

Frame	Height in	Bay width in	Color
	86	23.62	galvanized
	2.278	31.49	galvanized

Shelf	Bay width in	Bay depth in	Max. load lbs*	Color
	39.13	23.62	440	galvanized
	50.47	23.62	550	galvanized

Shelf	Bay width in	Bay depth in	Max. load lbs*	Color
	39.13	31.49	440	galvanized
	50.47	31.49	550	galvanized

Cross beam	Bay width in	Color
	39.52	galvanized
	50.86	galvanized

Load sign with carrier plate	Color
	galvanized

Cover cap	Color
	black

\*Spacing details given are based on even loads. The load details apply only when using shelves with two W 3000 PLUS cross beams per level.

# ACCESSORIES



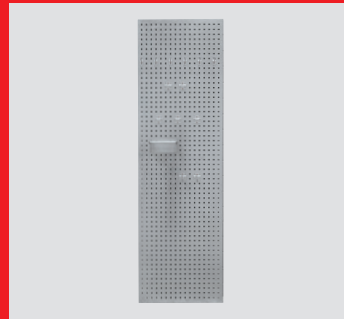
## Kanban sign holder

Total height 12.59 in  
Holder 11.81 in wide,  
8.14 in high  
Order no. 6670358



## Holder for cable reel

Width 17.32 in  
Depth 4.92 in  
Ø axle .59 in  
Order no. 6670359



## Perforated plate side wall

Height 88.77 in  
Order no. 6670360 (W18.81 in)  
Order no. 6670361 (W26.69 in)



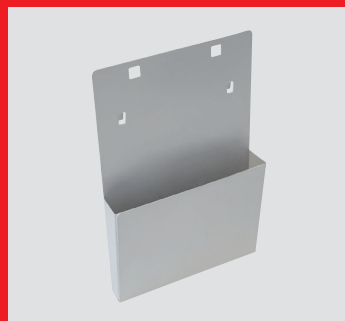
## Threaded rod mounting set

Depth 5.11 in  
Order no. 6670362  
(W 23.22 in)  
Order no. 6670363  
(W 31.1 in)



## Plinth Rail

Height 33.46 in  
For bay width 39.52 in:  
Order no. 6670405  
For bay width 50.86 in:  
Order no. 6670407



## Form holder

DIN A5  
Order no. 6670364



## Inclined hook

Length .55/1.57 in  
Order no. 167861



## Pliers holder

Height .78 in  
Order no. 167884  
(W 2.16 in)  
Order no. 167885  
(W 2.95 in)



## Machine tool holder

Order no. 167889 (Ø 2.36 in)  
Order no. 167890 (Ø 3.14 in)



## Cable holder

Order no. 167891 (L 5.9 in)  
Order no. 167892 (L 1.73 in)



## Double tool clip

Order no. 167876 (Ø .23 in)  
Order no. 167877 (Ø .39 in)  
Order no. 167878 (Ø .51 in)  
Order no. 167879 (Ø .62 in)  
Order no. 167880 (Ø .74 in)



## Double tool holder

Width 1.37 in  
Order no. 167859 (L 2.95 in)  
Order no. 167860 (L 5.9 in)

Products featured in articles may be subject to change and technical modification. Errors and omissions excepted.

The products featured may be subject to change and technical modification. Colors of products depicted in printed versions may differ from the original. Errors and omissions excepted.

Würth Industry North America  
598 Chaney Ave.  
Greenwood, IN 46143  
T (877) 99-WURTH  
www.wurthindustry.com

